



## Peconic Estuary Partnership

PROTECTING AND RESTORING LONG ISLAND'S PECONIC BAYS

# August 20th, 2025 PEP TAC/NRSC JOINT Meeting 10:00am-12:00pm

TAC Chairs: Matt Sclafani & Brad Peterson  
NRSC Chairs: Theresa Masin & Marissa Velasquez-Rosante

### **Zoom Participants:**

- Edit your zoom name to include your organization/affiliation. (*Open Participant window, Rename*)
- To interject, please use Raise Hand Feature
- Chat will be monitored.

## Peconic Estuary Partnership Mission and Governance

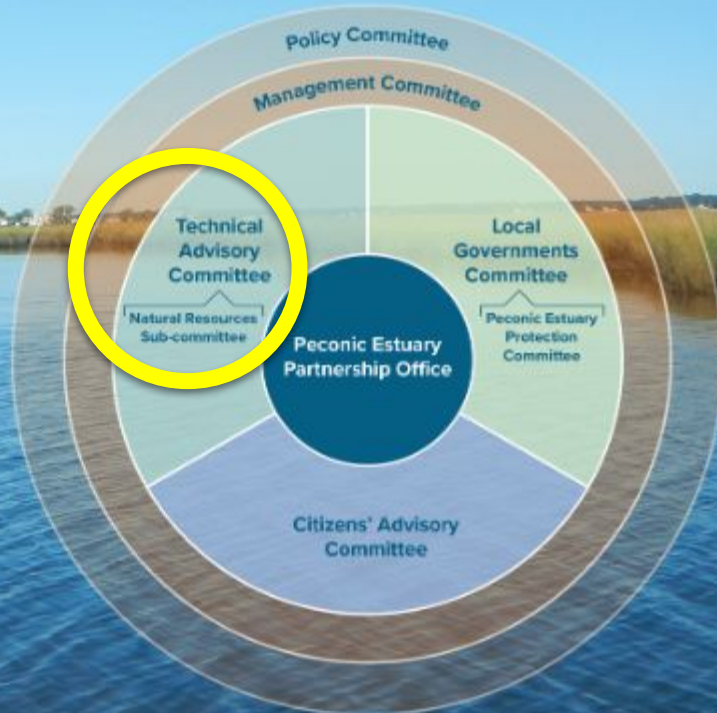
### Our Mission

To protect and restore the Peconic Estuary and its watershed.

### Our Vision

A successful partnership dedicated to restoring clean water, protecting and enhancing vibrant ecosystems and communicating sound science for nature-based coastal planning in the Peconic Estuary and its watershed.

This diagram shows the structure of the PEP Management Conference.



## TAC Attendance & Roll Call



**Marissa Velasquez-Rosante (PEP)**

**10:05:** Attendance and Roll Call

# Attendance

## Technical Advisory Committee Core Voting Organization List

Accabonac Protection Committee  
Central Pine Barrens Joint Planning and Policy Commission  
Concerned Citizens of Montauk (CCOM)  
Cornell Cooperative Extension of Suffolk County (CCE)  
Group for the East End (GFEE)  
New York Sea Grant  
New York State Department of Environmental Conservation (NYSDEC)  
Peconic Baykeeper  
Peconic Estuary Protection Committee (PEPC)  
Peconic Land Trust (PLT)  
Seatuck Environmental Association  
State University of New York at Stony Brook  
Suffolk County  
Suffolk County Soil and Water Conservation District (SCSWCD)  
The Nature Conservancy (TNC)  
Town of Brookhaven  
Town of East Hampton  
Town of Riverhead  
Town of Shelter Island  
Town of Southampton  
Town of Southold  
Town of Southampton Trustees  
Town of Southold Trustees  
Town of EH Trustees  
United States Geological Survey (USGS)  
Village of Greenport  
Village of Dering Harbor  
Village of North Haven  
Village of Sag Harbor

Each organization  
that is included in  
the Core Voting  
Organizations list is  
entitled one  
member vote.

## Natural Resource SubCommittee Core Voting Organization List

Accabonac Protection Committee Audubon New York  
Central Pine Barrens Joint Planning and Policy Commission  
Concerned Citizens of Montauk (CCOM)  
Cornell Cooperative Extension of Suffolk County (CCE)  
Group for the East End (GFEE)  
**Long Island Invasive Species Management Association**  
New York Sea Grant  
New York State Department of Environmental Conservation (NYSDEC)  
Peconic Baykeeper  
Peconic Land Trust  
Seatuck Environmental Association  
State University of New York at Stony Brook  
Suffolk County  
**Suffolk County Parks**  
The Nature Conservancy (TNC)  
Town of Brookhaven  
Town of East Hampton  
Town of Riverhead  
Town of Shelter Island  
Town of Southampton  
Town of Southold  
Town of Southampton Trustees  
Town of Southold Trustees  
Town of EH Trustees  
United States Geological Survey (USGS)  
United States Fish and Wildlife Service (USFWS)  
Village of Greenport  
Village of Dering Harbor  
Village of North Haven  
Village of Sag Harbor



Co-Chairs appointed every two (2) years

TAC Leadership:

Co-Chairs: Matt Sclafani

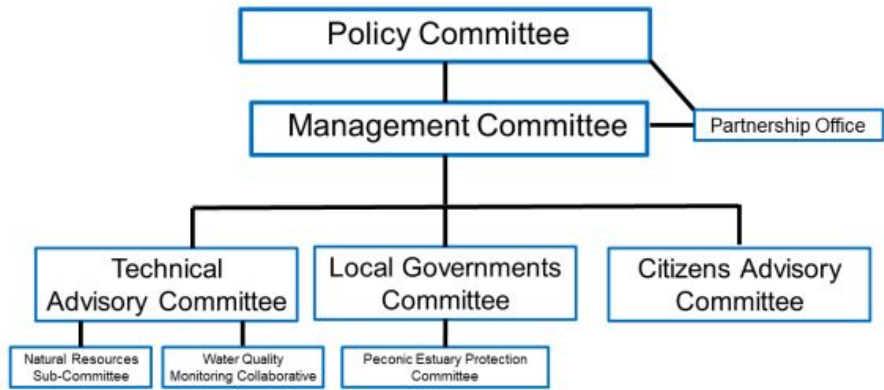
\*Re- appointed: March 2023

Co-Chair: Brad Peterson

Appointed by the TAC May 2022

Stepping down as Co-Chair in 2025

**Peconic Estuary Partnership Management Structure**



**Figure 1.** The Peconic Estuary Partnership’s management structure, all supported by the Partnership’s office staff.

Motion to accept meeting minutes from May 7th. 2025 TAC Meeting & February 5th, 2025 NRSC Meeting

Nominations for Co-Chairs!

Please email the program office ([marissa.velasquez@stonybrook.edu](mailto:marissa.velasquez@stonybrook.edu)) for last minute nominations

# 2025 TAC & NRSC Chair Nominations



## TAC Nominations

Dr. Matt Sclafani, *Cornell Cooperative Extension*

Dr. Steve Heck, *Peterson Lab (SBU/SoMAS)*

## NRSC Nominations

Theresa Masin, *Town of Southampton*

***\*\*Elections for TAC and NRSC Chairs will be held on November 5th, 2025\*\****

# 2020 Measurable targets (10-year targets)

## SAV Targets:

- Increase in eelgrass shoot density and extent in existing beds
- Overall net increase in extent of Peconic eelgrass beds

## Wetland/Shoreline Targets

- Restore 250 acres of tidal wetland habitat = *Currently at 105 acres*
- Net increase in native high marsh habitat and total native marsh habitat from 2005 level
- Net decrease in acres of invasive Phragmites from 2005 level
- No net increase in hardened shorelines (includes breakwaters, bulkheads/seawalls, groins, jetties, piers, and revetments) from next measurement

## Diadromous Fish Habitat Targets:

- Restore 242 acres of diadromous fish habitat on the Peconic River - *Currently 203 acres*
- Restore an additional 60 acres of diadromous fish habitat within other areas of the Peconic watershed
- Increase in the alewife population in the Peconic River from current level

## Land Protection Targets:

- **Acres to conserve**

**\*\*2020 Habitat Plan was updated and accepted in November 2024\*\***

## 2020 PECONIC ESTUARY PARTNERSHIP HABITAT RESTORATION PLAN



Prepared by:

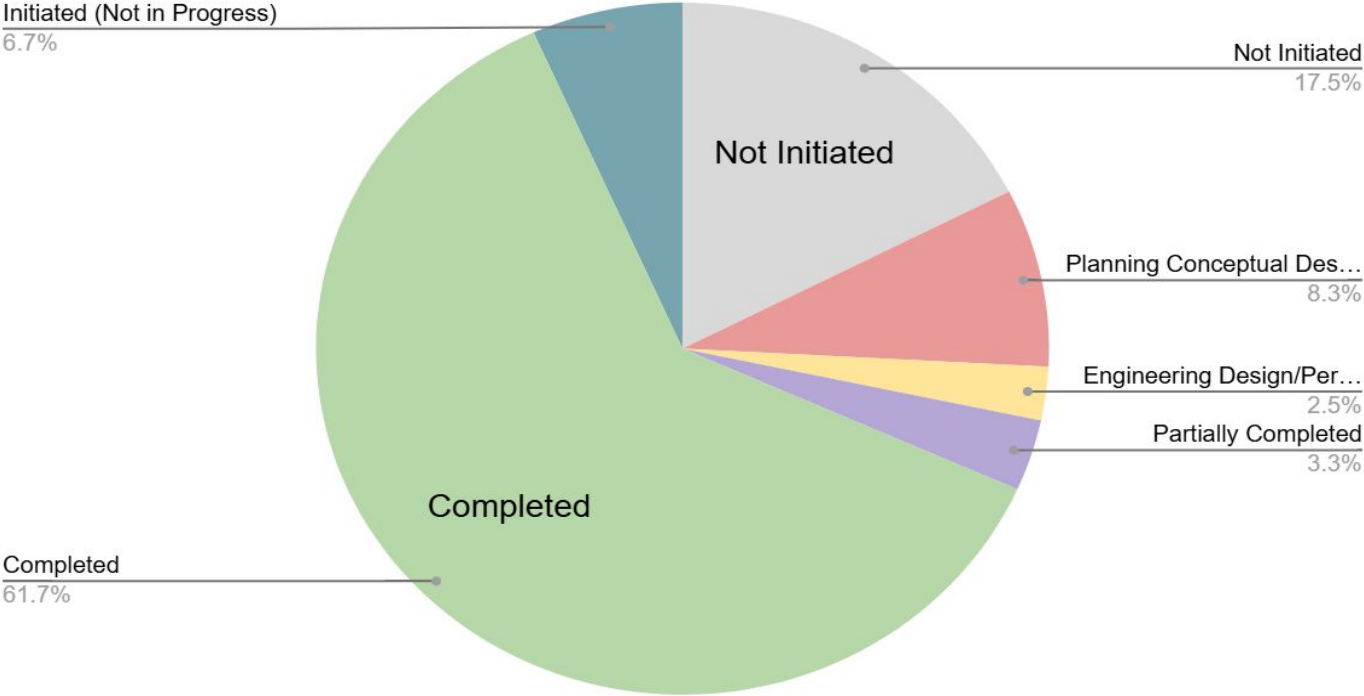
Elizabeth Hornstein, Peconic Estuary Partnership State Coordinator

Plan originally prepared in 2017. Final revisions 2020.

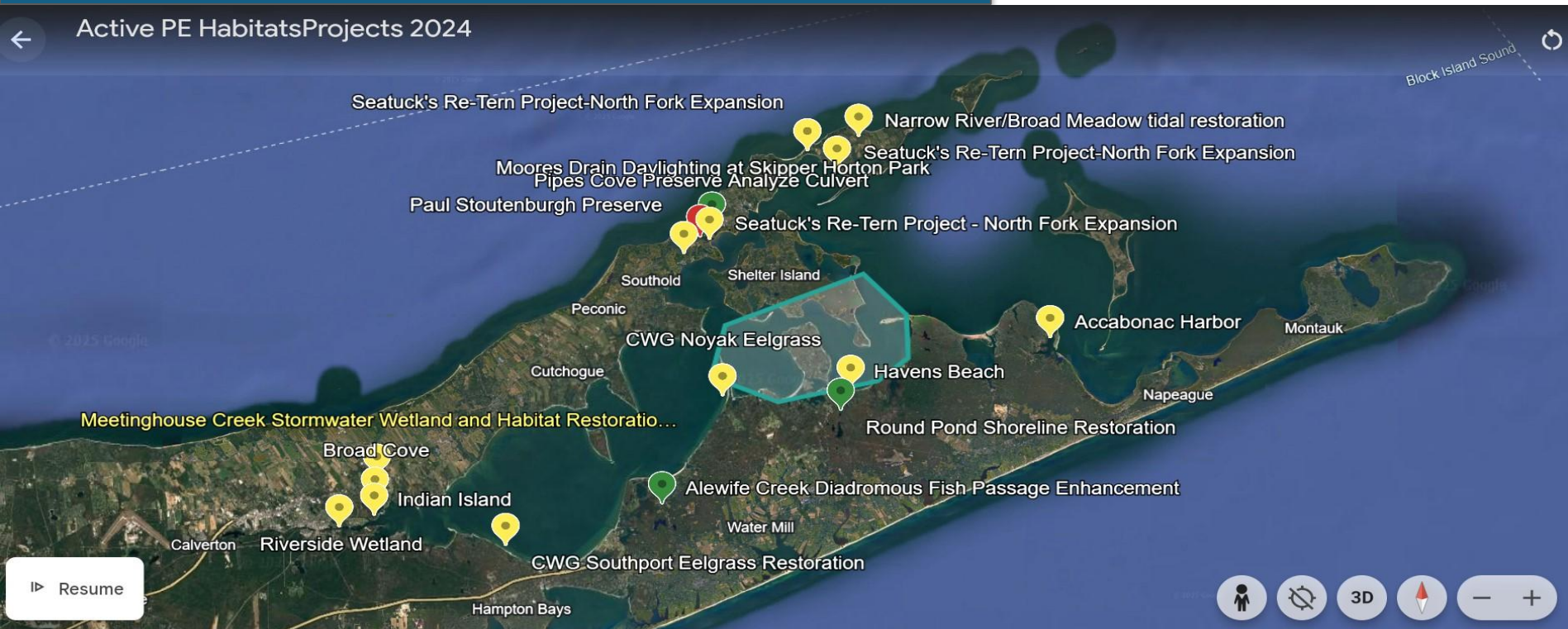


# Habitat Plan Project Status

## 2020 Habitat Plan Update Project Progressions



# Project Mapper Updates and Current Status



18 projects listed on PEP mapper with status updates

# PEP NRSC Acres to Conserve



**10:20** Marissa Velasquez-Rosante, *PEP*

Update on acres to conserve

CLPS Tool

**10:30** Questions/Discussion

# Goal: Restore & protect key habitats & species diversity in the Peconic Estuary and its watershed

## OBJECTIVE H

Restore and protect key habitats and species diversity in the Peconic Estuary and its watershed

### KEY PARTNERS

Lead entities and partner organizations for Actions under Objective H are listed below with Performance Measures. Additional partners may be added over time.

### ACTION 28

Protect critical natural resource areas and high-priority lands in the Peconic Estuary watershed

The 2019 Critical Lands Protection Strategy used three classes of criteria to prioritize undeveloped, developed, and agricultural land parcels for protection: (1) Habitat and Water Quality Protection, (2) Inundation Areas, and (3) Groundwater Protection. The resulting map products can be used by East End municipalities for land-use planning and zoning, and to identify potential opportunities for developed or agricultural lands to be converted back to a natural state to increase resilience to climate change. PEP and partners will work to protect the high-priority lands identified in the Critical Lands Protection Strategy and to update the Strategy every five years.

#### ACTION 28: PERFORMANCE MEASURES, PARTNERS AND FUNDING

##### Short Term

- Meetings with all relevant partners to disseminate and discuss Critical Lands Protection Strategy and garner support for implementation

PEP \$ EPA

- Develop a target for the number of protected acres agreed on and incorporated into PEP CCMP Tracking System

Local Governments, NYSDEC, PEP, Peconic Land Trust, Pine Barrens Commission, Suffolk County \$ EPA

##### Long Term

- Assistance provided to municipalities in land use planning and conversion of high-priority developed areas back to a natural state

Local Governments, Long Island Farm Bureau, PEP, Peconic Land Trust, Pine Barrens Commission, Suffolk County, The Nature Conservancy

\$\$\$\$ Grants, Local Government CPF Funds, NYS



CCMP action 28: Develop a target for the number of protected acres.

- To be tracked in our new tracking system

# PEP CLPS Tool :Current Status

- **Description & Benefit:** Parcel-level prioritization **for land preservation** using sea level rise (SLR) scenarios, marsh migration, and groundwater depth.



Current layers demonstrated

Data gaps ID

Goal Use: Website (local govt, Land preservation decision makers)

Current Data being used

## CLPS Current Data being used:

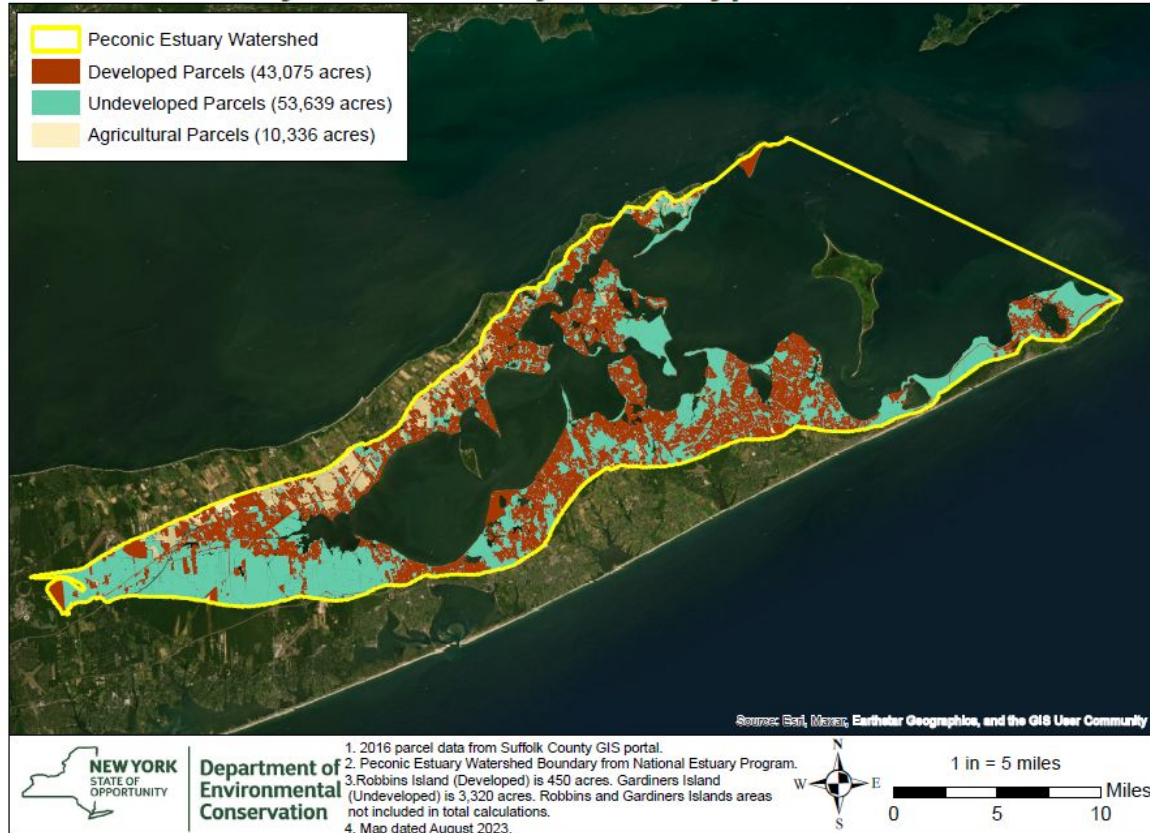
**Table 2: Datasets Used in CLPS Analysis**

Relevant CLPS Criteria/ Vulnerability Assessment Risk	Dataset	Source
Property boundaries, ownership information, and use codes	Suffolk County Tax Map Data	Suffolk County Real Property Tax Service Agency (2018)
Land use categories	Suffolk County Land Use	Suffolk County (2016)
Freshwater or tidal wetland	National Wetlands Inventory	US Fish & Wildlife Service (2018)
Inundation areas and sea level rise	SLAMM	NYSERDA/Warren Pinnacle Consulting, Inc. (2015)
Present-day flood zone	Digital Flood Insurance Rate Map Database, Suffolk County, New York	FEMA (2009)
Significant habitat and water quality	Significant Coastal Fish and Wildlife Habitats	NYSDOS (2015)
Current groundwater table	Depth to groundwater mapping	USGS (2016)
Rising groundwater table	Depth to groundwater after 34-inch SLR	Suffolk County / CDM Smith (2016)
Surface water protection	Groundwater travel time to surface waters	Suffolk County / CDM Smith (2016)
Special groundwater protection area	Critical Environmental Areas in NYS	NYSDEC (2016)

Dataset / Category	Original Source (Year)	Most Recent Source ??? (As of 2025)	Notes / Link
Property boundaries, ownership, use codes	Suffolk County Tax Map Data (2018)	Suffolk County Real Property Tax Service Agency (2024) - TOWN info more accurate	<a href="#">Suffolk County GIS Viewer</a>
Land use categories	Suffolk County Land Use (2016)	<b>Suffolk County - TOWN info more accurate</b>	
Freshwater or tidal wetlands	USFWS National Wetlands Inventory (2018)	USFWS NWI (Ongoing updates)	<a href="#">NWI Program</a>
Inundation areas / Sea level rise (SLAMM)	NYSERDA / Warren Pinnacle (2015)	NYSERDA-funded modeling (2020–2023 projects)	<a href="#">NY Climate Science Clearinghouse</a>
Present-day flood zones	FEMA DFIRM (2009)	FEMA Preliminary or Effective FIRMs (Updated 2020–2023)	<a href="#">FEMA Map Service Center</a>
Significant habitat / water quality	NYSDOS Significant Coastal Fish and Wildlife (2015)	NYS Office of Planning / OPDCI (latest formal updates per area)	<a href="#">SCFWH Rating Forms</a>
Current groundwater table	USGS (2016)	USGS Long Island Groundwater Reports (2021–2024) - subwatersheds plans?	<a href="#">USGS LI Groundwater</a>
Rising groundwater table (SLR impact)	Suffolk County / CDM Smith (2016)	NYSERDA/USGS recent modeling ????	
Groundwater travel time to surface waters	Suffolk County / CDM Smith (2016)	SC Subwatershed plan????	
Special Groundwater Protection Areas (CEAs)	NYSDEC (2016)	NYSDEC (Map static; latest as of 2023)	<a href="#">NYS DEC Lands</a> , <a href="#">NYS GIS</a>

# Recap: Agriculture Acreage to Conserve

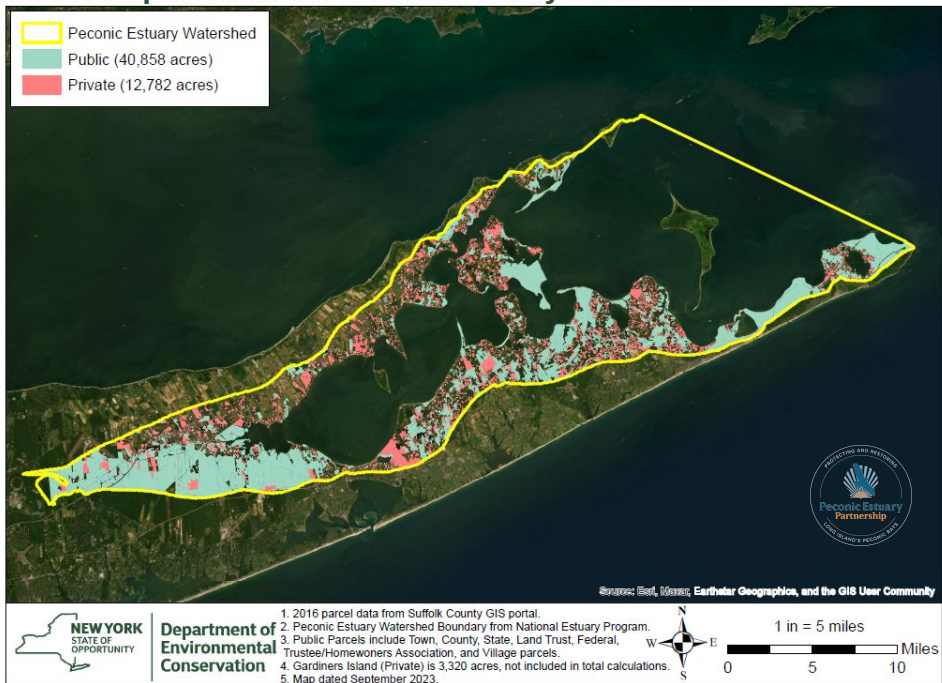
## Peconic Estuary Watershed by Parcel Type



- **10,336 acres of agricultural land (9% of the Watershed)**
- February 2025 Meeting: NRSC voted to maintain/to preserve these areas within the Peconic Estuary Watershed
- **This is a Tier 1 Priority for Acreage Conservation**

# PE watershed undeveloped space, private vs public

## Undeveloped Land in Peconic Estuary Watershed



Parcel Type	Quantity (acres)	PE Watershed (%)
Public	40,858	35.5
Private	12,782	11.1
Total undeveloped	53,640	46.6
Gardiners Island	3,320	2.9
Robbins Island	450	0.4

**Discussion: Keep all the Public held parcels as undeveloped.**

<b><u>Land Preservation Status</u></b>	<b><u>Sum Acreage (acres)</u></b>
Developed*	37,523
Agriculture	10,336
Privately/Publicly Protected*	46,182
Unprotected (Partially developed)*	5,978
Unprotected/Threatened *	11,350
Peconic Land Trust	5,718
Underwater Land*	473,334
0-2yr Travel Time Areas	Need to validate total acreage number
Available Shoreline Parcels	Need to validate total acreage number

\*Data provided by PLT

# Acres to Conserve - Discussion

- *Tier 1 Priority:*
  - Publicly owned, undeveloped parcels
  - Available shoreline parcels
  - 0-2 yr travel time areas (subwatershed priorities)
    - Aquifer protection in undeveloped parcels
  - **Agriculture Land (voted on in last NRSC meeting)**
- *Tier 2 Priority:*
  - Every other undeveloped parcel

## Action:

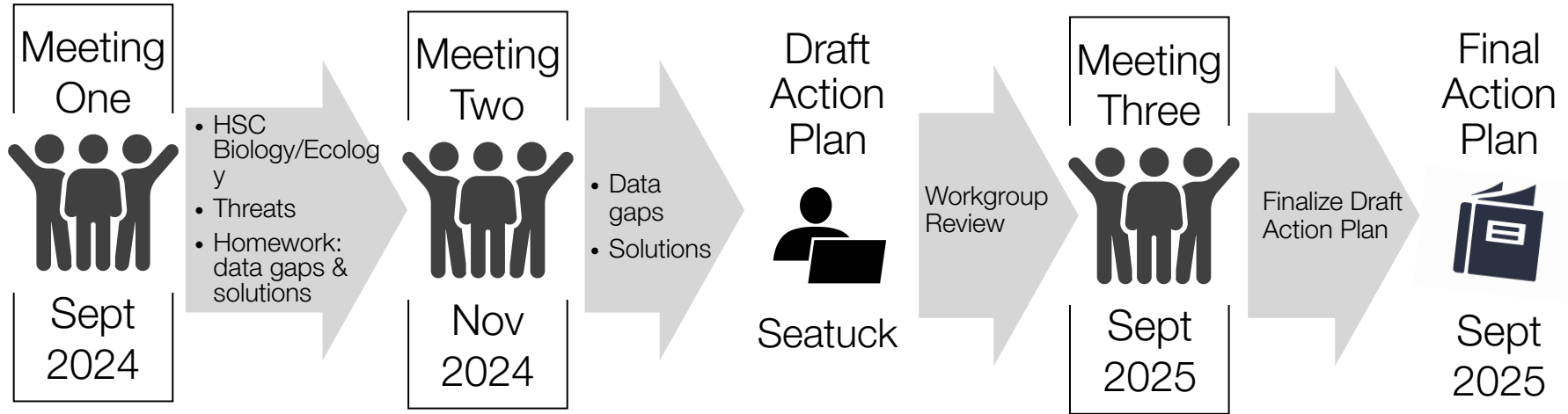
**\*\*Vote on agreeing to the NRSC priority tiering of these parcel classifications\*\***

**\*\*Vote on agreeing that these are the parcels that should be focused on to conserve under PEP NRSC\*\***

# PECONIC ESTUARY HORSESHOE CRAB WORKGROUP



# PEP HORSESHOE CRAB WORKGROUP: TIMELINE



# IT'S NOT JUST HORSESHOE CRABS ...

LEAST TERN



DIAMONDBACK TERRAPIN



SEMIPALMATED PLOVER



INVERTEBRATES



AMERICAN OYSTERCATCHER



HARBOR SEAL



# OYSTER SHELL RECOVERY



cornell cooperative extension

MARINE PROGRAM



Rotary

Club of Riverhead



PECONIC  
BAYKEEPER

# PEP Bulkhead Removal



**10:50 Jade Blennau *PEP***

**PEP Bulkhead Removal Initiative**

**Proposed Locations**

**11:05 Questions/Discussion**

## IIJA Year 3 funds

### **Water Access and Bulkhead Removal Assessment:**

As part of our focus on community access to the shoreline, we will use these funds to identify bulkheads for removal and carry out feasibility and cost estimates.

# Bulkhead Southold



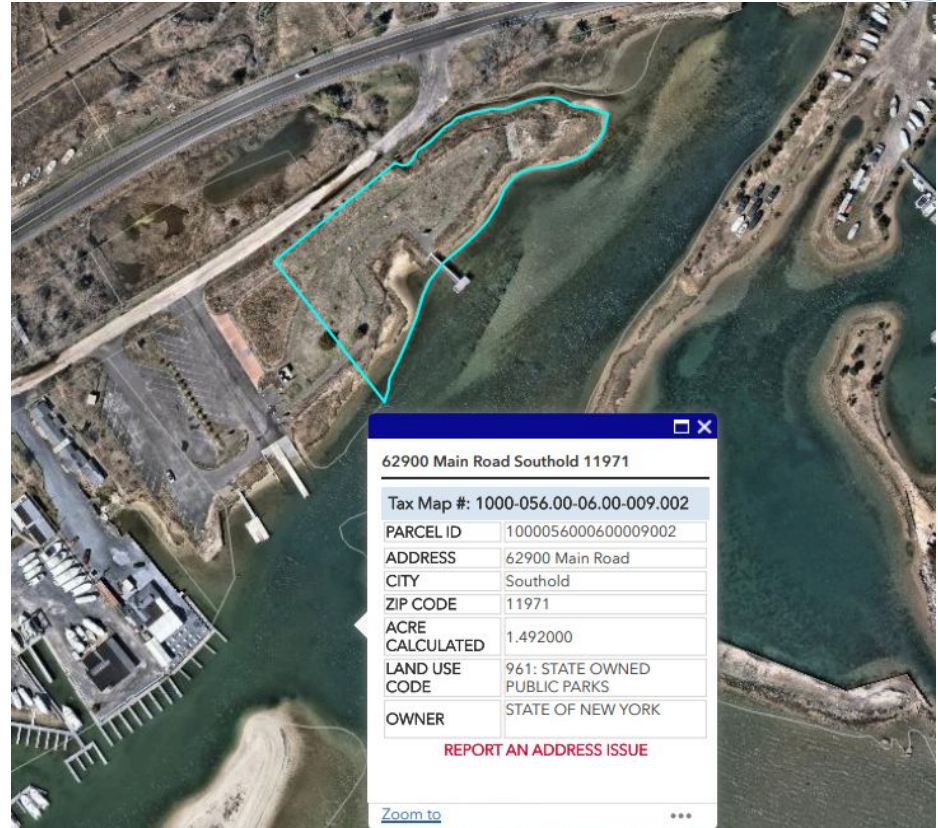
**62900 Main Road, Southold  
11971**

**Owner: NYS**

**~189m of hardened shoreline**

**Context: GOOGLE EARTH  
MAP:**

[https://earth.google.com/earth/  
d/1\\_3oV3v6AA2JesQQUL0xJ  
ZHli21PAsLI?usp=sharing](https://earth.google.com/earth/d/1_3oV3v6AA2JesQQUL0xJZHli21PAsLI?usp=sharing)



Historical Imagery < Apr 30, 2001 > >|

1985 1994 2001 2004 2010





Historical Imagery



Apr 2, 2004



1985

1994

2001

2004

2

62900 Main Rd- NYS Land





Historical Imagery <

Apr 5, 2021 >



2014

2015

2016

2017

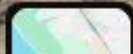
2018

2019

2021

2023

62900 Main Rd- NYS Land





Historical Imagery



Oct 19, 2023



>|

11

2012



2013



2014



2015



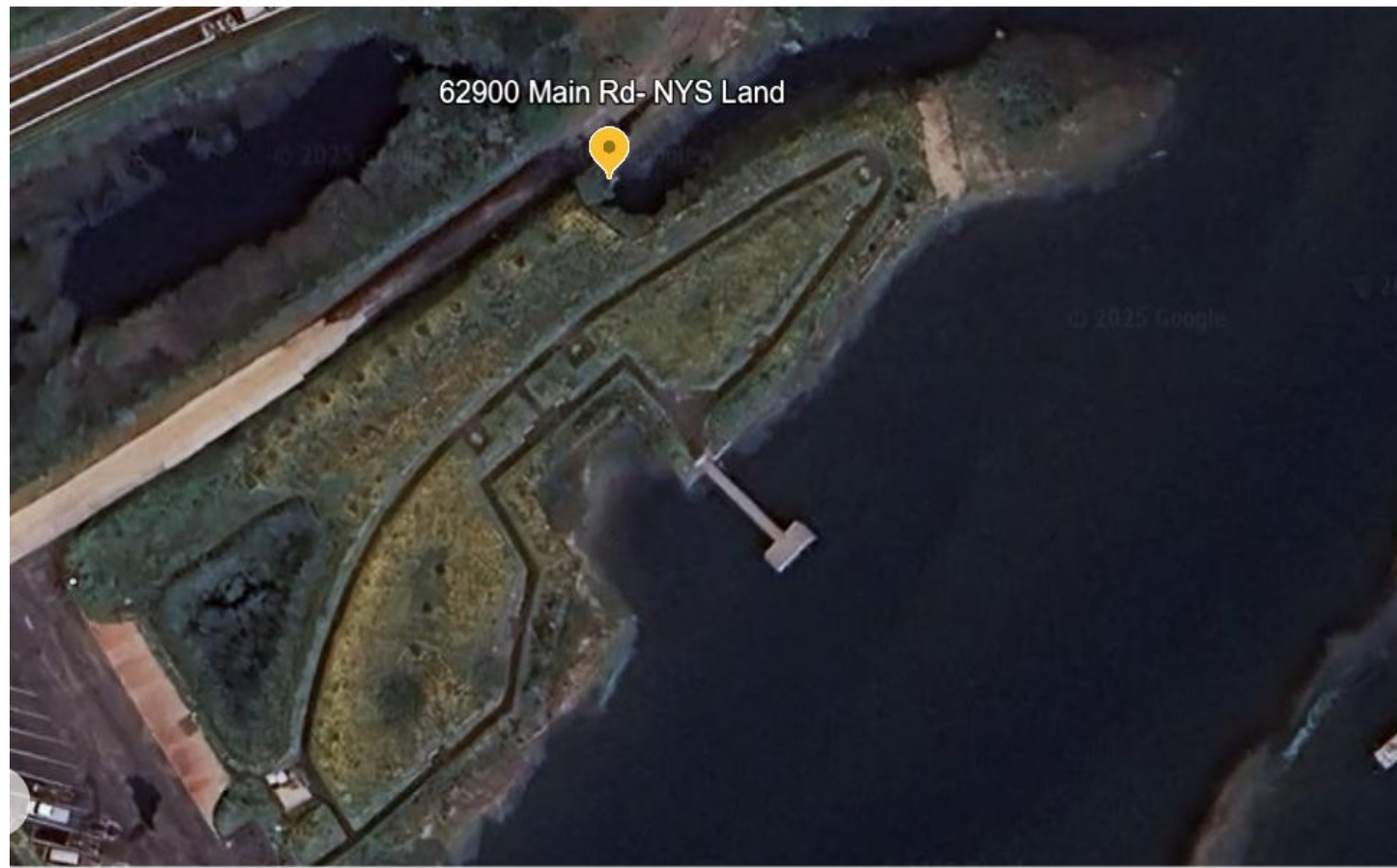
2016



2017



2018



# Bulkhead Southold



62900 Main Rd- NYS Land

Thoughts?

# Bulkhead Southampton



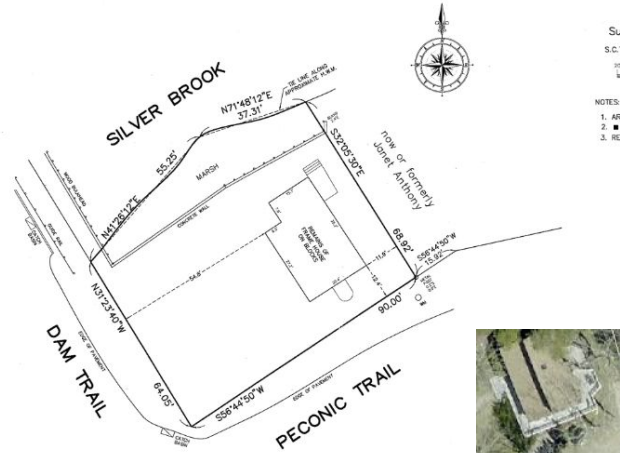
**33 Peconic Trl**  
**HAMLET: Flanders**  
**Southampton Town**

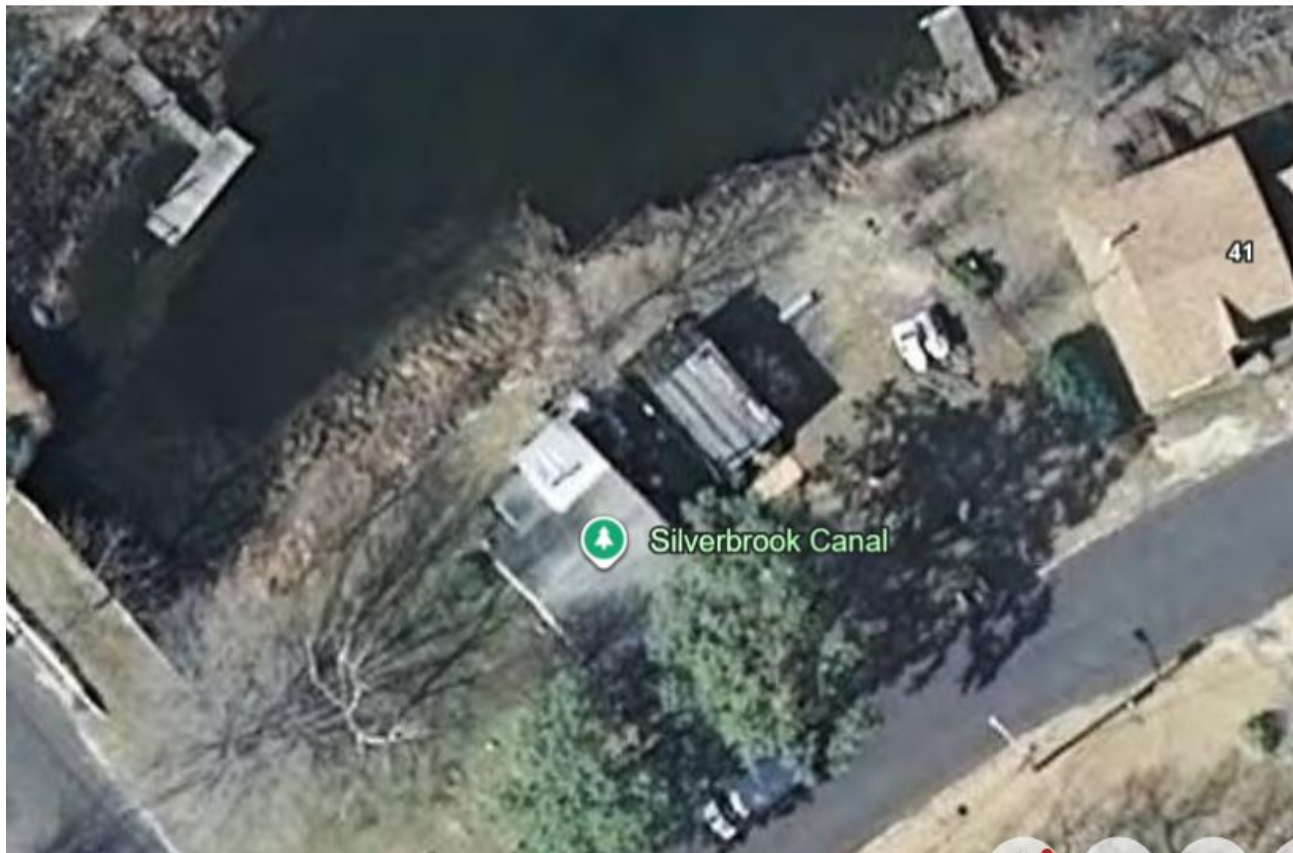
**Owner: Southampton Town**

**~27m of hardened shoreline**

**Context: GOOGLE EARTH**  
**MAP:**

[https://earth.google.com/earth/d/1\\_3oV3v6AA2JesQQUL0xJZHli21PAsLI?usp=sharing](https://earth.google.com/earth/d/1_3oV3v6AA2JesQQUL0xJZHli21PAsLI?usp=sharing)





y



Mar 7, 2012



2006

2007

2008

2009

2010

2011

2012

2013

2014

2015



Historical Imagery



Apr 5, 2021



2011

2012

2013

2014

2015

2016

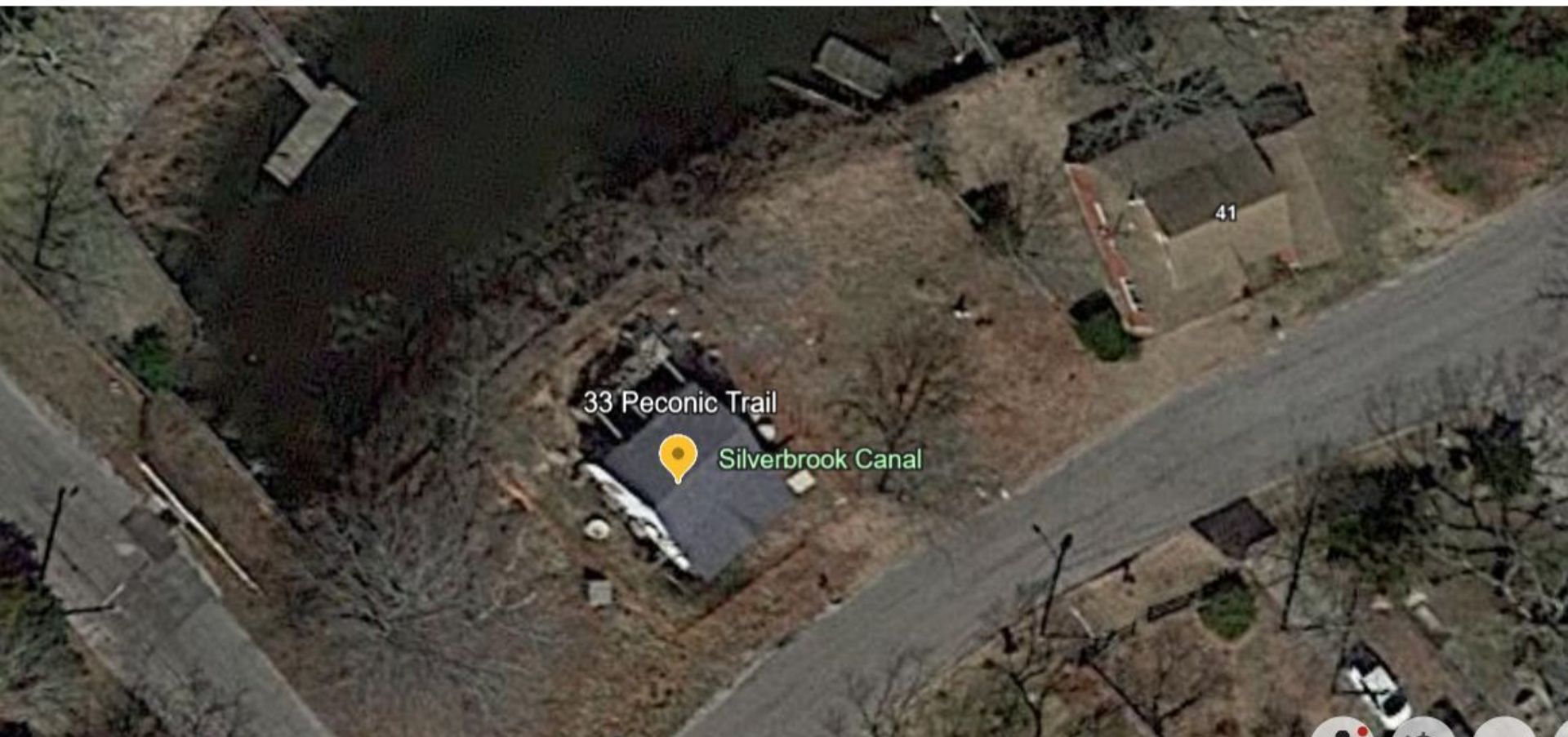
2017

2018

2019

2021

2024







Thoughts?

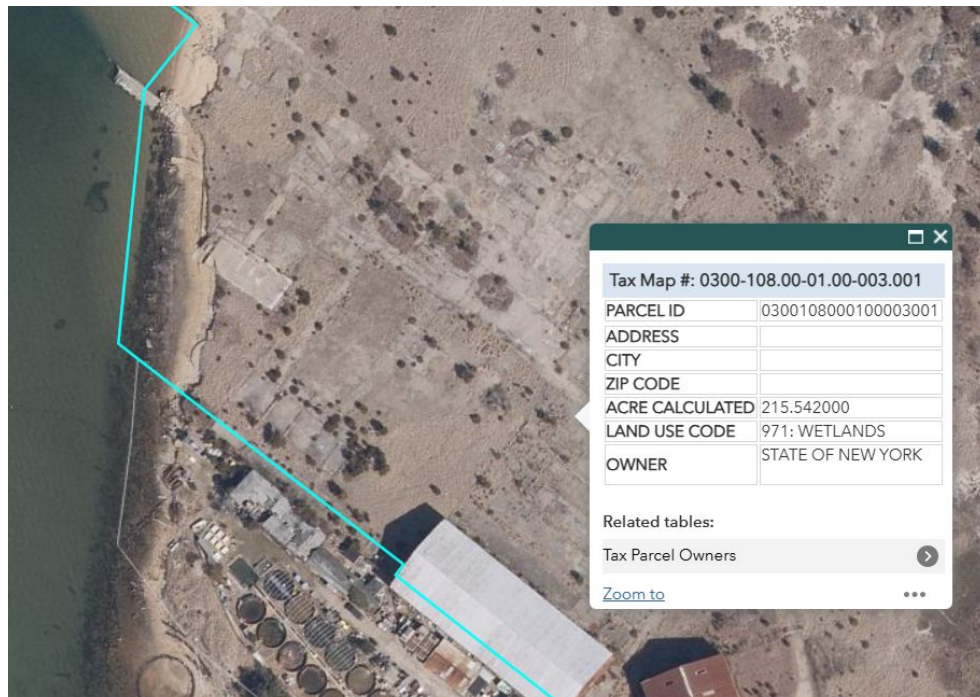
## Napeague State Park

Smith Meal Factory where the  
processed bunker into fish meal

**~96m of hardened  
shoreline**

**Context:** GOOGLE EARTH  
MAP:

[https://earth.google.com/earth/d/1\\_3oV3v6AA2JesQQUL0xJZHli21PA5ILI?usp=sharing](https://earth.google.com/earth/d/1_3oV3v6AA2JesQQUL0xJZHli21PA5ILI?usp=sharing)



Below is an aerial of the Smith Meal Plant in 1980 before dismantling of the plant began in the early 1980's by the State of New York.



1980 aerial of Smith Meal in Promised Land

<https://eastendthen.wordpress.com/2017/01/14/smith-meal-company-promised-land/>

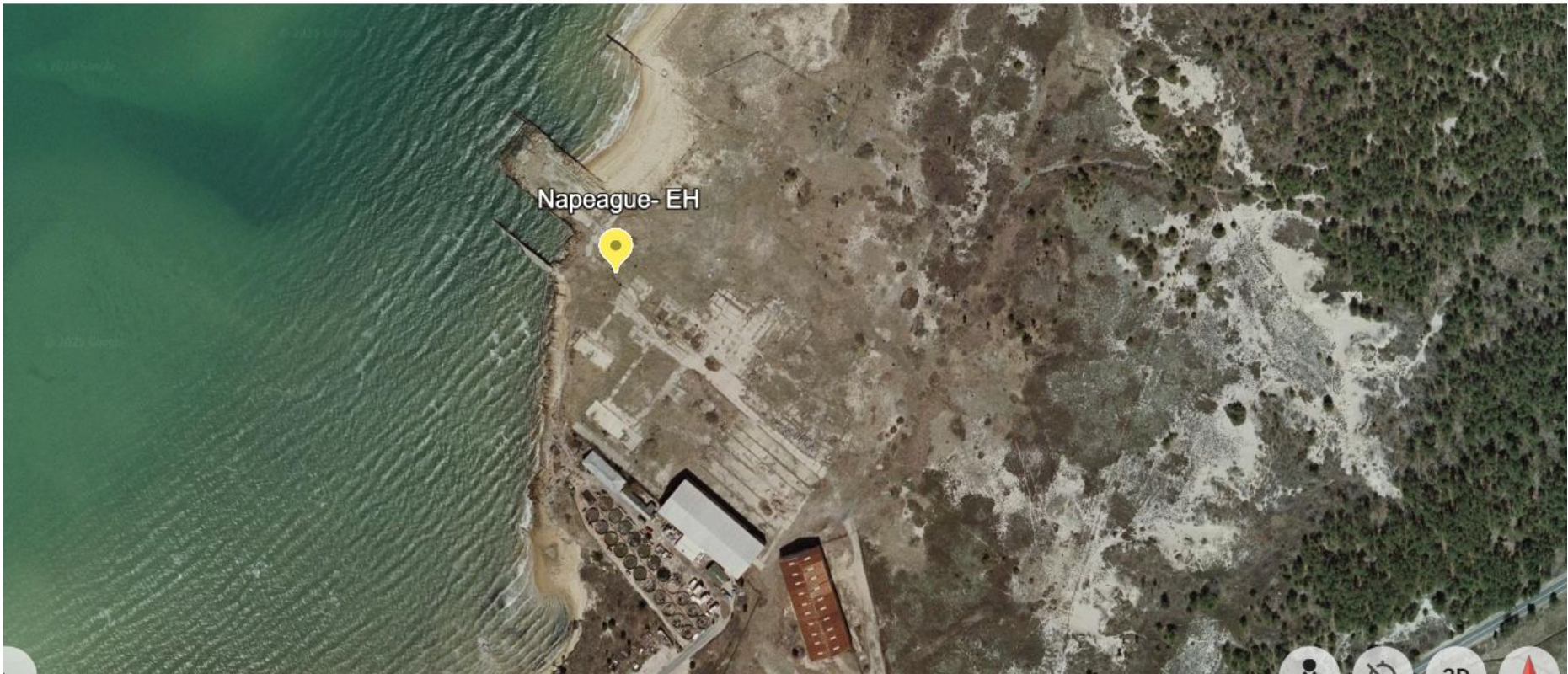




Historical Imagery



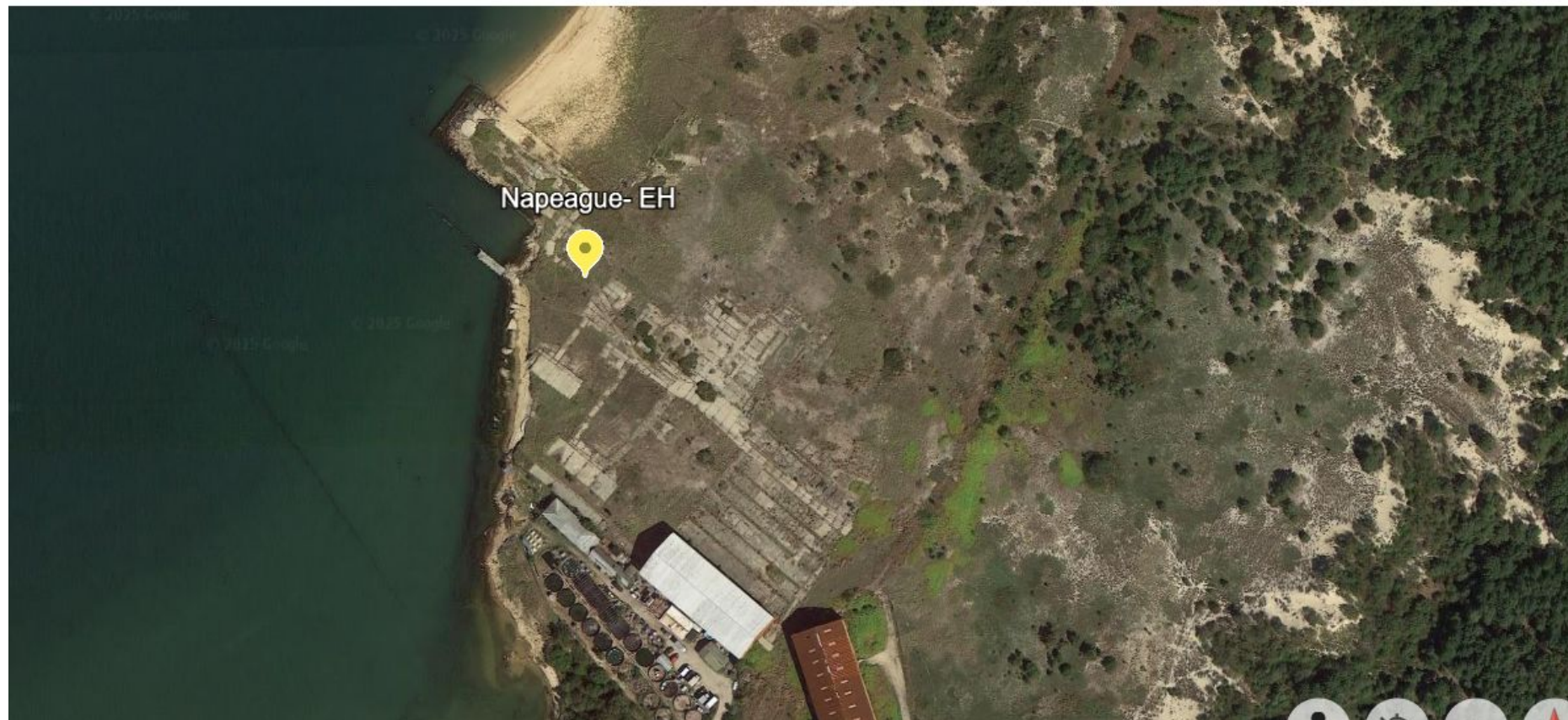
Apr 2, 2004



Historical Imagery

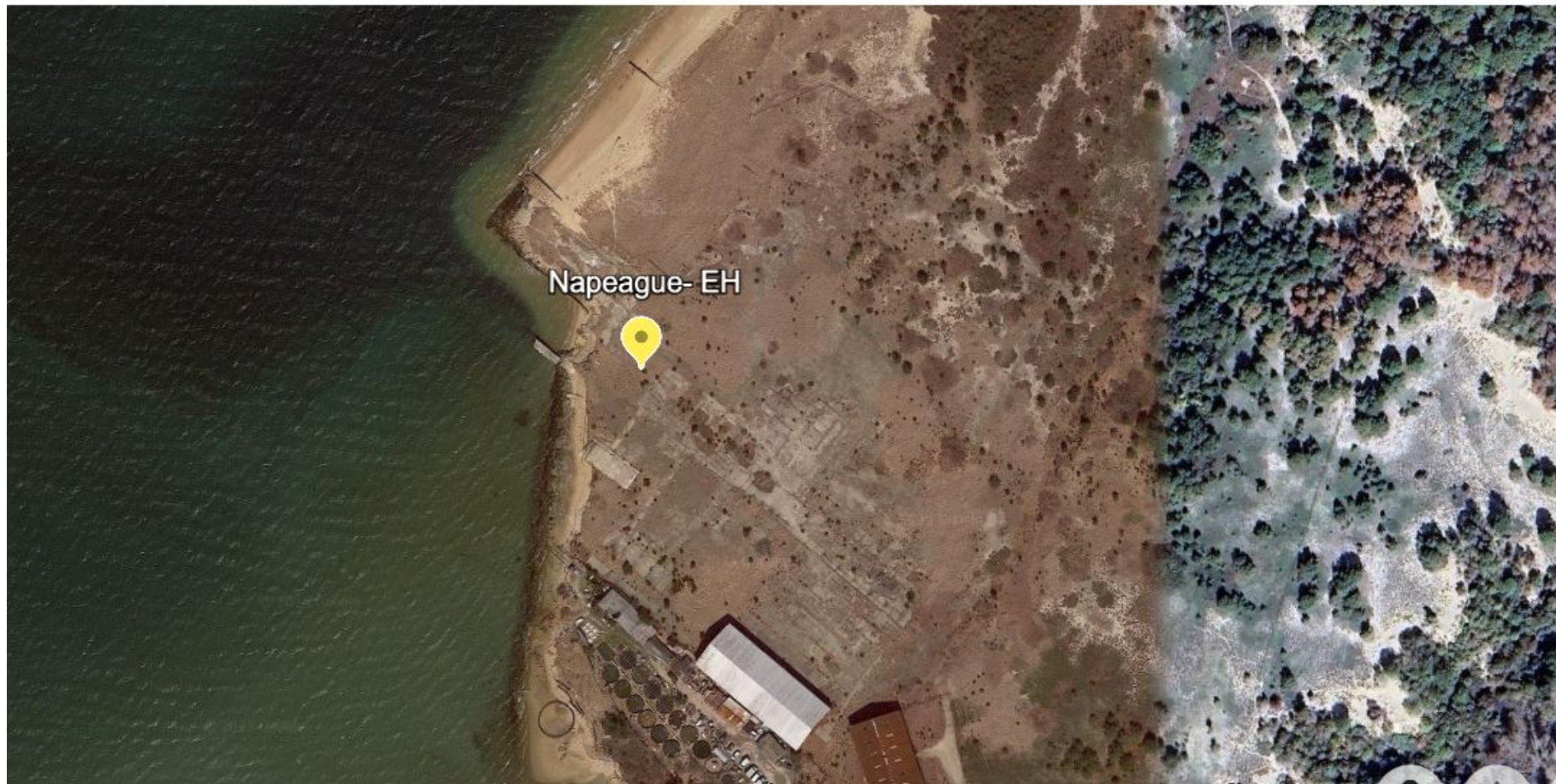


Sep 20, 2013



Historical Imagery < Oct 19, 2023 >

>|



# Bulkhead East Hampton

See more data



Hayden Soloviev

## Rank Priority: Discussion

### Southold

62900 Main Road,  
Southold 11971  
Owner: NYS  
~189m of hardened  
shoreline



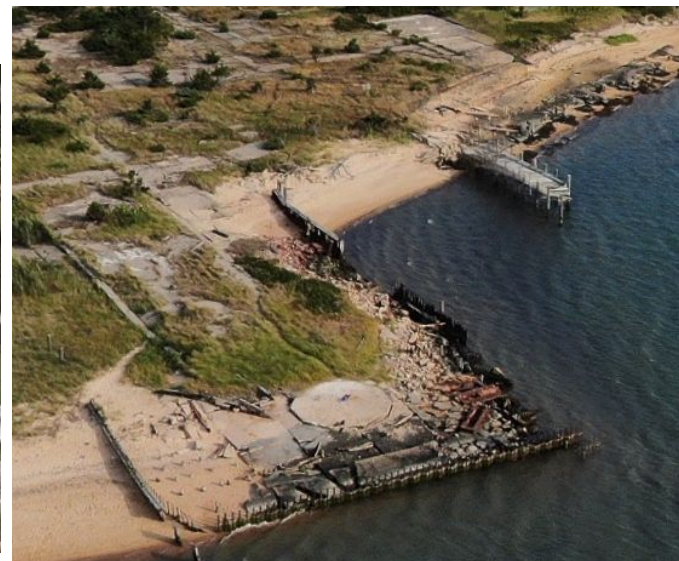
### Southampton

33 Peconic Trl  
HAMLET: Flanders  
Owner: Southampton Town  
~27m of hardened  
shoreline



### EH Napeague State Park

Owner: NYS Parks  
Prev Fish meal factory  
~96m of hardened shoreline



# PEP Water Quality App



**11:15 Joyce Novak, *PEP***

Updates on PEP Water Quality App

Future Directions

**11:25 Questions**

# Peconic Estuary Water Quality Information at Your Fingertips

The Long Island Beach & Water Quality App



**The Geospatial Center**

School of Marine and Atmospheric Sciences  
Stony Brook University

# Summary

- ❖ Developed an intuitive, location-based water quality mobile app powered by a GIS-enabled data curation web service, integrating both historical and real-time water quality data from authoritative sources within the PEP study area.
- ❖ Plan to release in September (both Apple App Store and Google Play Store).

2:04



## Loading Screen

2:01

## The Long Island Beach & Water Quality App

## Welcome Screen

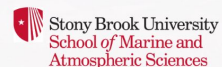
### Welcome!

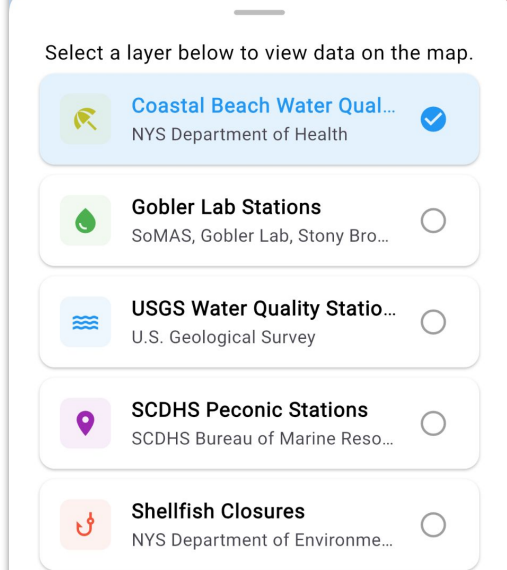
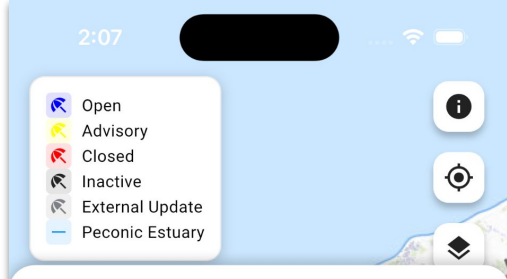
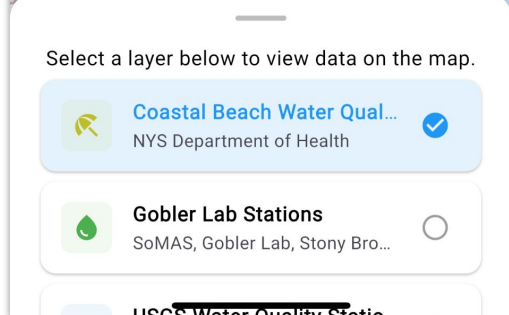
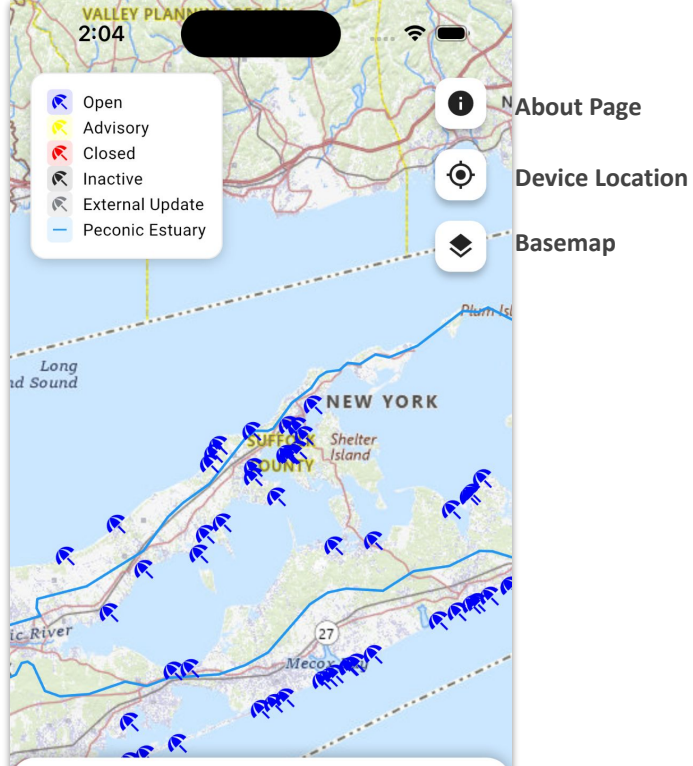
This app makes it easy to access water quality data, whether you're a beach lover, fisherman, bayman, swimmer, or looking for scientific information about Long Island's water quality conditions. The data is right at your fingertips!

Press the button below to access the map and start exploring! We hope you find the app useful and informative.

 [START EXPLORING](#)

Disclaimer: The Water Quality is for informational purposes only. While the app continuously mirrors the latest data from state and county sources, we recommend using the links within the app to check with the state and county health departments for the most up-to-date information.





**Main Screen:**  
a list of water quality  
information in the draggable  
bottom sheet

- Coastal Beach Water Quality
- Gobler Lab Stations
- USGS Water Quality PEP Stations
- SCDHS Peconic Estuary Stations
- Other NYS web map services
  - Shellfish Closures
  - Harmful Algal Blooms

2:05



Long Island Beach &amp; Water Quality App

## About

The Peconic Bay National Estuary Program (Peconic Estuary Partnership) has been funding water quality monitoring in the Peconics since 2000. This water quality app integrates multiple data sources including the Water Quality Index at the Gobler Lab at Stony Brook University, the NYS Department of Health, the U.S. Geological Survey Continuous Monitoring Stations, and the Suffolk County Department of Health. For the full PEP Annual Water Quality Report click our logo below.



## Team

The SoMAS Geospatial Center (Director: Sung-Gheel Jang | Student Developer: Yemoe Aung) at Stony Brook University.

## Disclaimer

This app is for informational purposes only. While the app continuously mirrors the latest data from state and county sources, we recommend using the links within the app to check with the state and county health departments for the most up-to-date information on where swimming and fishing are permitted.

2:08



Long Island Beach &amp; Water Quality App

## Team

The SoMAS Geospatial Center (Director: Sung-Gheel Jang | Student Developer: Yemoe Aung) at Stony Brook University.

## Disclaimer

This app is for informational purposes only. While the app continuously mirrors the latest data from state and county sources, we recommend using the links within the app to check with the state and county health departments for the most up-to-date information on where swimming and fishing are permitted.

## Credits

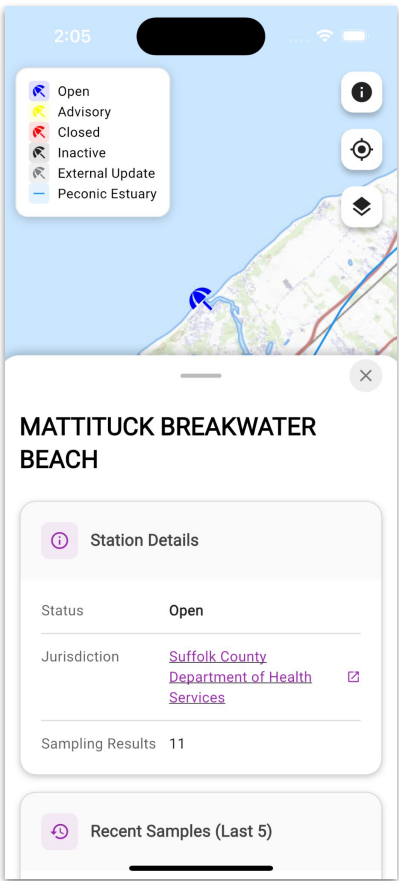
Coastal Beach Water Quality: NYS Dept. of Health  
Beach Water Quality Information | Gobler Lab  
Stations: SoMAS Gobler Lab, Stony Brook University |  
USGS Water Quality Stations: U.S. Geological Survey |  
SCDHS Water Quality Stations: Suffolk County  
Department of Health Services Bureau of Marine  
Resources | USGS Topo: ©2025 USGS The National  
Map | World Imagery: ©2025 Esri, Maxar, Earthstar  
Geographics, and the GIS User Community.

The Peconic Estuary Partnership funds all of the USGS continuous water quality monitoring stations in the Peconic watershed and provides support to Suffolk County and the Gobler Lab for their water quality data efforts.

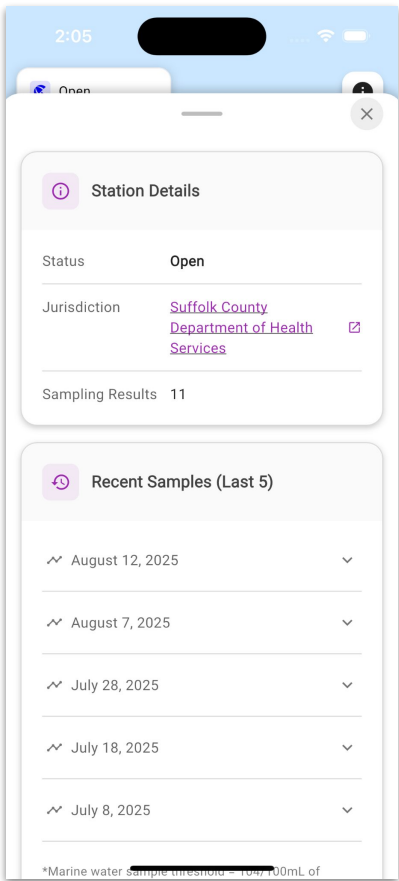
## About Page

- The PEP logo leads to [the website of the PEP Annual Water Quality Report.](#)

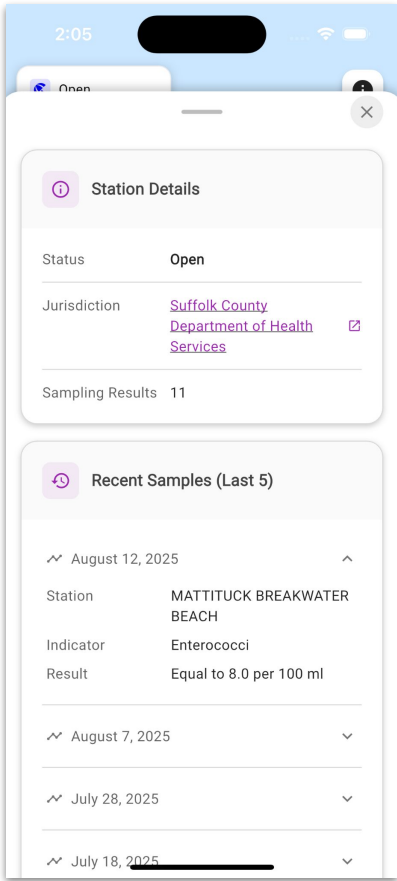
# Coastal Beach Water Quality ([NYS Department of Health](#))



Information of a Beach Site

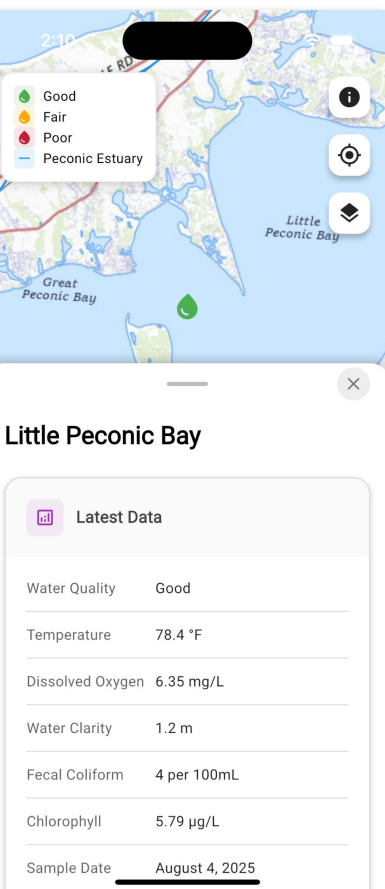
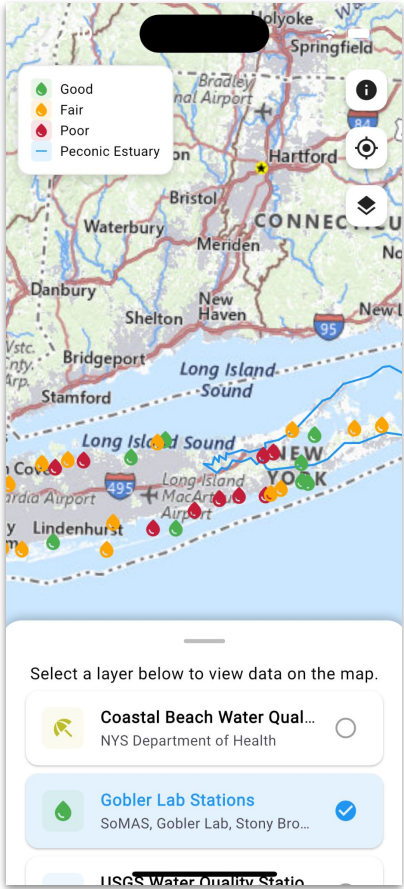


Draggable Information Sheet

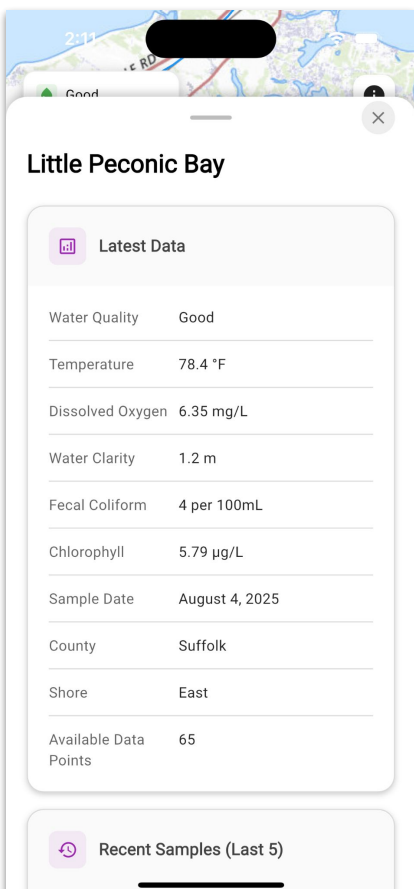


Recent Samples Collapsible

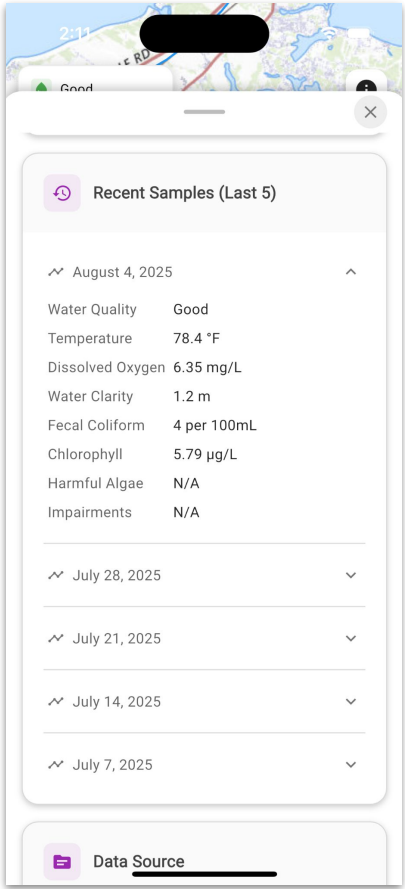
# Gobler Lab Monitoring Stations



Monitoring Site

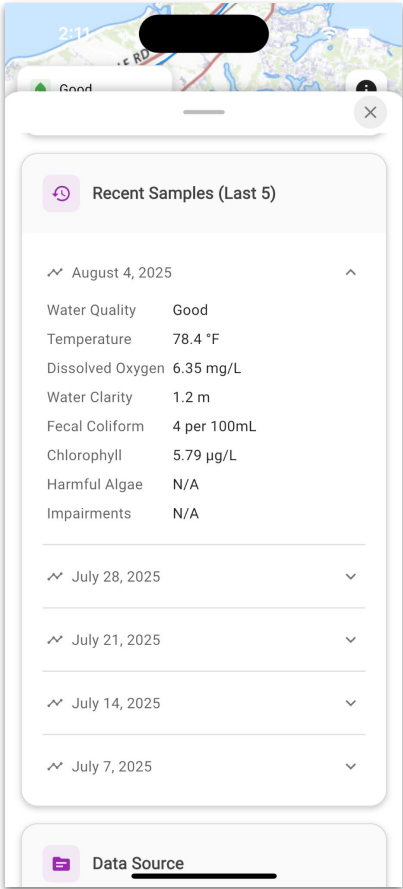


Draggable Information Sheet

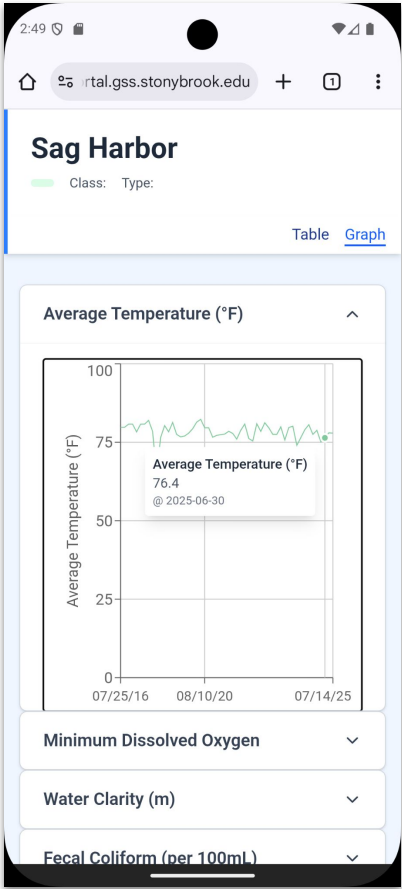
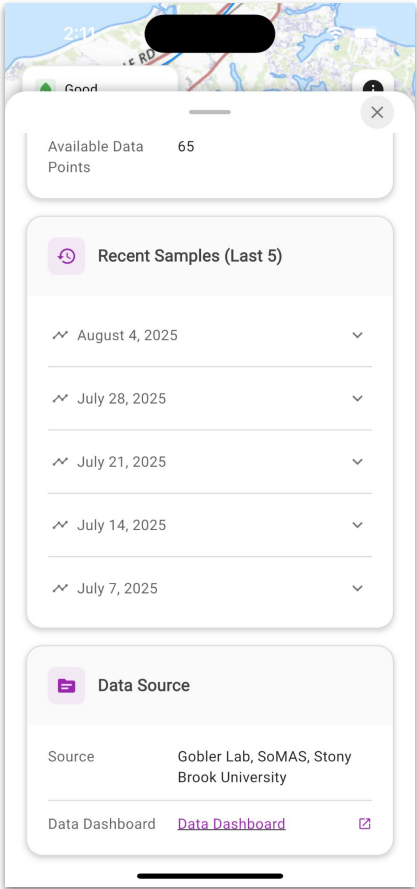


Recent Samples Collapsible

# Gobler Lab Monitoring Stations



Recent Samples Collapsible

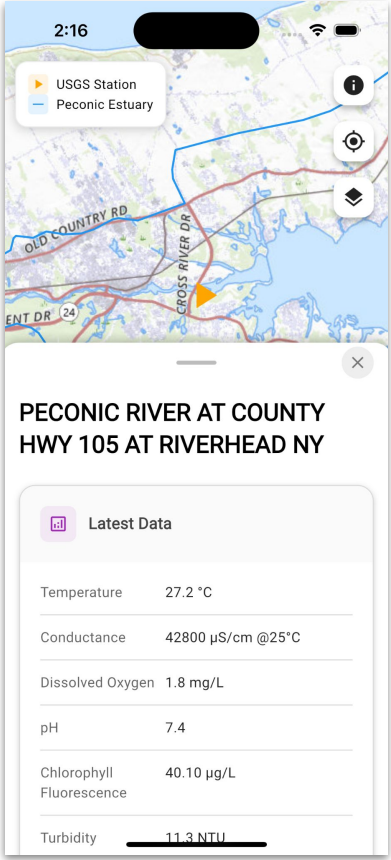


Data Dashboard View

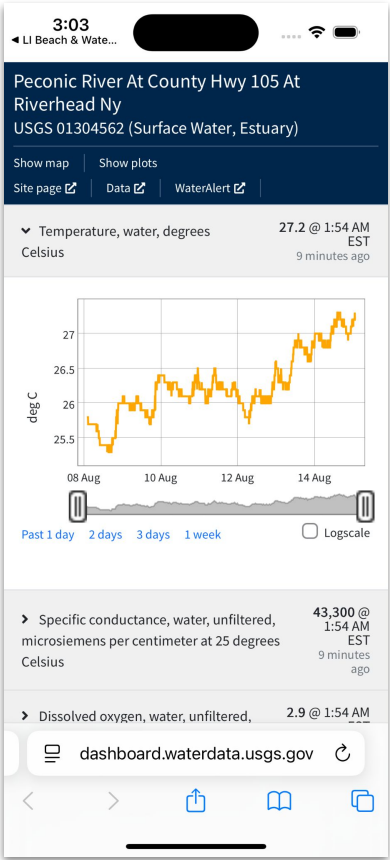
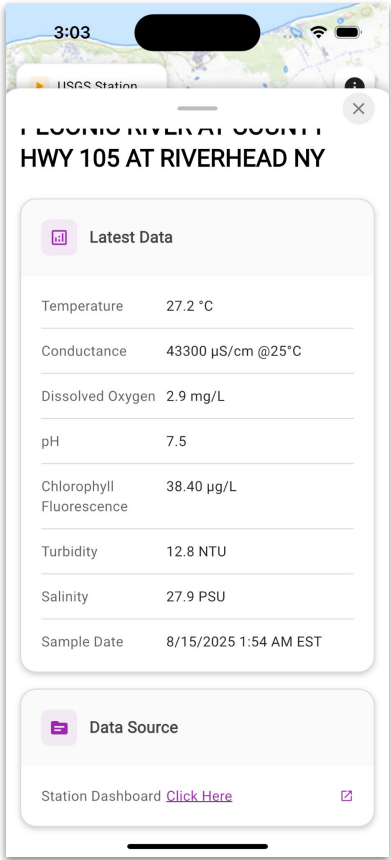
# USGS PEP Water Quality Stations (Live)



USGS PEP Monitoring Stations

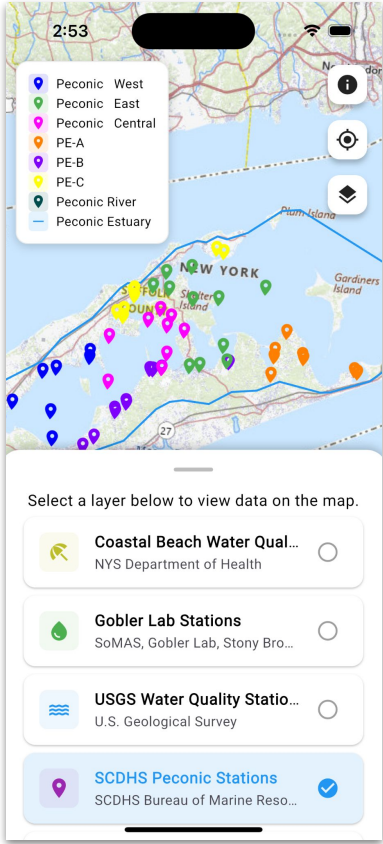


Live monitoring information

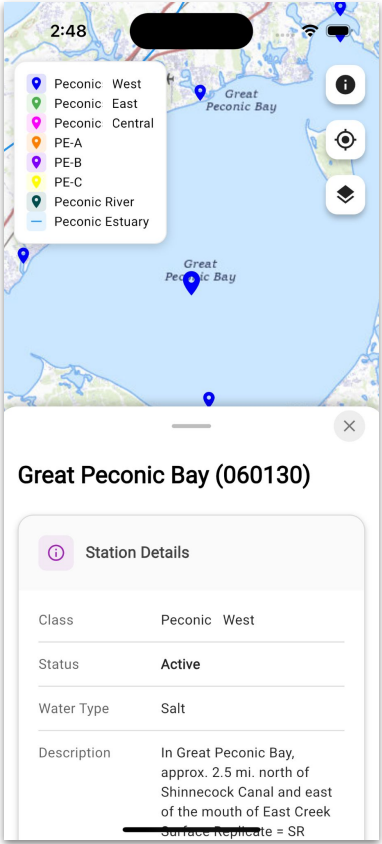


USGS Data Dashboard

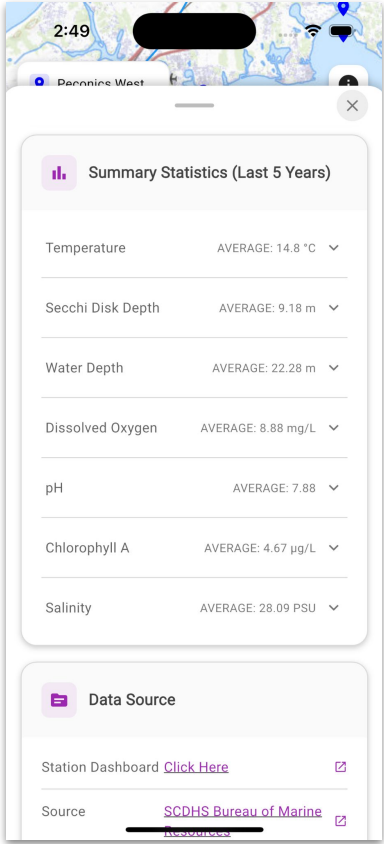
# SCDHS Peconic Estuary Stations (Suffolk County Department of Health Services)



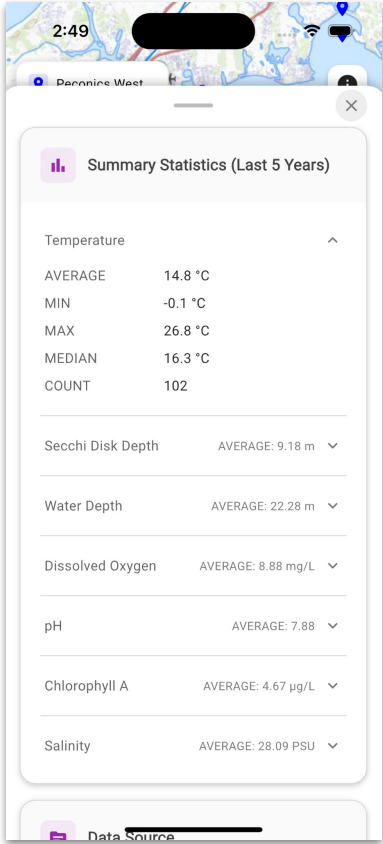
SCDHS Peconic Estuary Stations



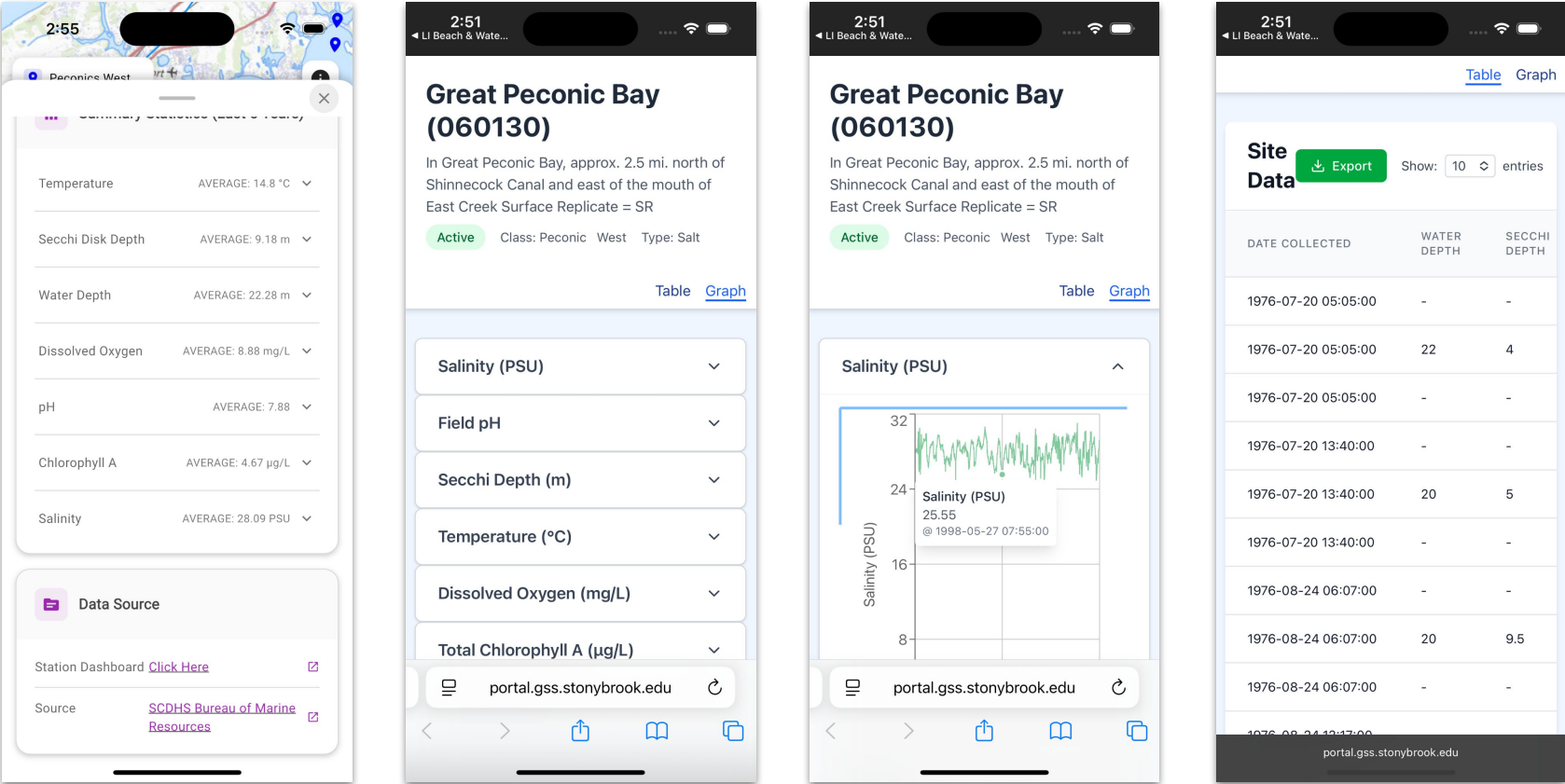
Monitoring Station Details



Collapsible Summary Statistics (Last 5 Years)



SCDHS Peconic Estuary Stations (Suffolk County Department of Health Services)



Data Dashboard View

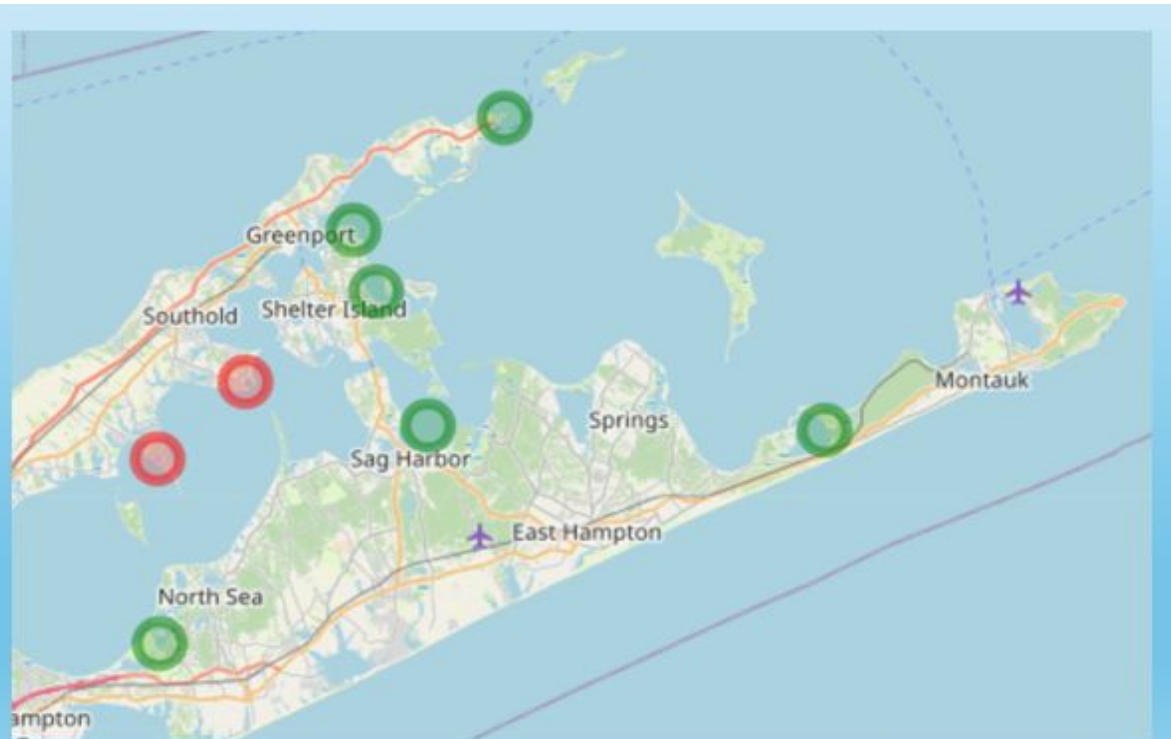
# PEP Project Updates

# Aquaculture Impacts Phase 1 & 2

- **Phase 1 : complete!**
- Phase 2: Field experiments to begin Summer 2025
- May 28th: Dr. Peterson & Dr. Volkenborn Presentation at NYSDEC



# Peconic Estuary SeagrassNET



- Site selections: Orient Point, Coecles Harbor, Sag Harbor, Cedar Point, Hay Beach, Bullhead Bay, Napeague Harbor & two wideongrass sites
- Pilot site for summer 2025: Changed to Cedar Point
- Citizen Science Monitoring at other SeagrassNET locations



# Peconic East - C.H.A.N.G.E.S

Creating Habitat

Acidification reduction

Nitrogen bio-extraction

Guarding our shorelines from

Erosion and storm surge

Sequestering of carbon

## In Progress

- Kelp and Oysters in the water now!
- Continual Water Quality Monitoring

## Site Suitability Updates!

**Menantic Creek- Not Ideal for restoration**

**Ganet Creek - Marginal Quality for Restoration**

**Ferry Rd. - Marginal Quality for Restoration**

**Sag Harbor Cove- Marginal Quality for Restoration**

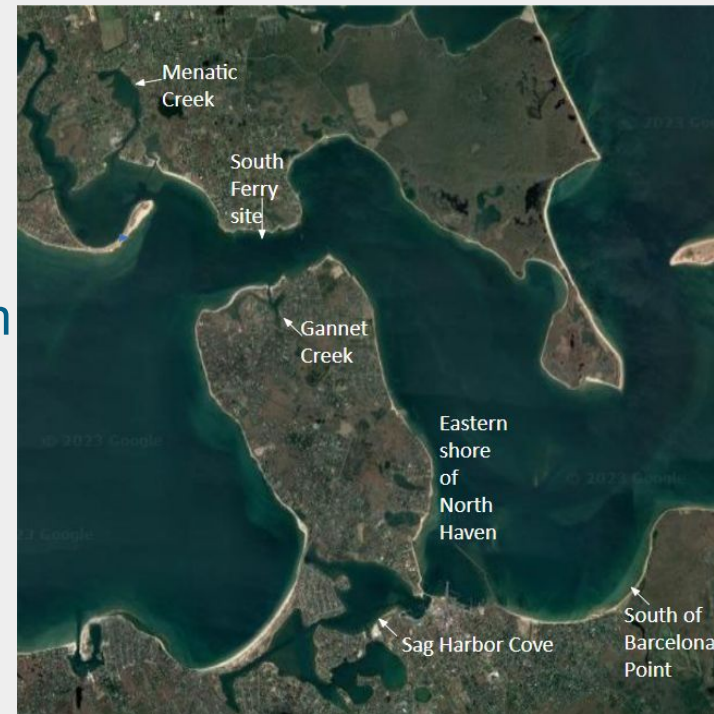
**North West Harbor- Promising for Restoration**

**East Side of North Haven- Promising for Restoration**

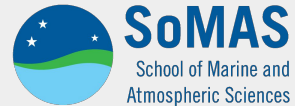
**Sugar kelp**

**Oysters**

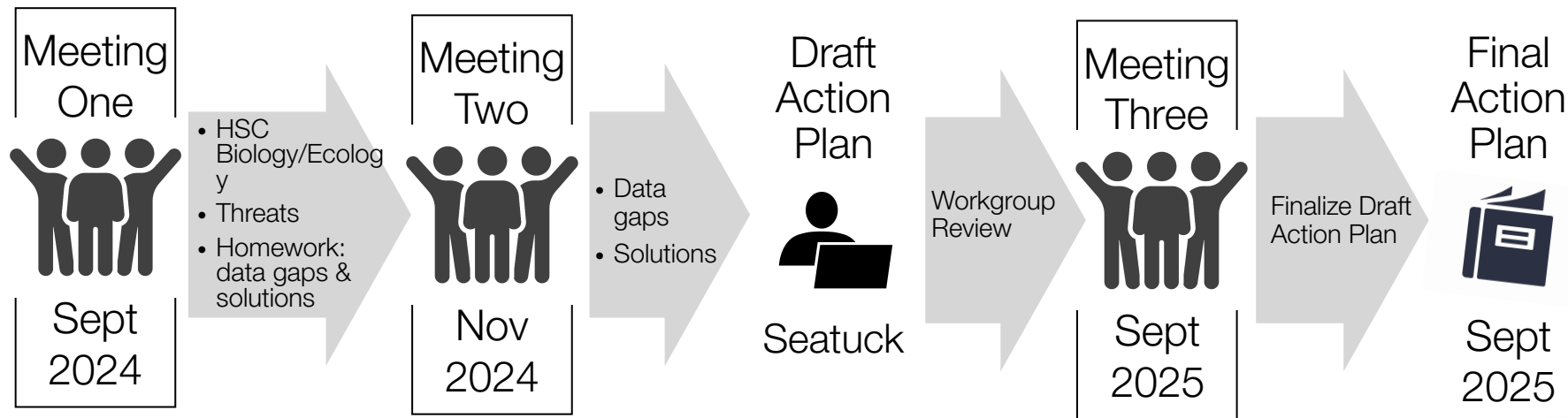
**Eelgrass**



**Year 2 & 3 Funds**



# PEP HORSESHOE CRAB WORKGROUP: TIMELINE



# Past Mini Grant Projects - Updates



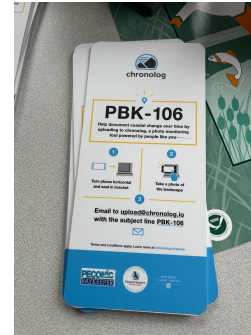
## CCE

Horseshoe crabs &  
diamondback terrapins:  
Satellite telemetry tags



## Shinnecock Indian Nation

Shinnecock Macroalgae  
Farming System Pilot Project



## Peconic Baykeeper

Recording Inundation  
Surrounding the Estuary:  
Project R.I.S.E



## Seaturck

Half Shells for  
Habitat (H4H)

# PEP Mini Grant 2024



Peconic Estuary  
Partnership

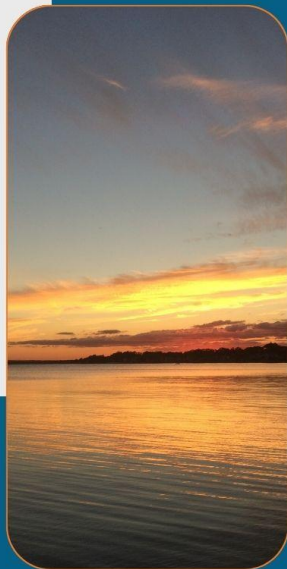
2024

## MINI GRANT

PEP'S 2024 Mini-Grant Funding Opportunity in the Peconic Estuary Watershed to implement a project that assists in accomplishing PEP's 2020 CCMP goal of Clean Waters for Ecosystem Health and Safe Recreation.

Application Deadline:  
November 1, 2024

PROPOSALS WILL BE  
CONSIDERED BETWEEN  
\$20,000 TO \$50,000  
PER PROJECT.



SUBMIT APPLICATIONS AND  
QUESTIONS TO:

Rachel Friedman  
Outreach Assistant  
Rachel.Friedman.1@stonybrook.edu



For more info visit:

[https://www.peconicestuary.org/  
projects/minigrant/](https://www.peconicestuary.org/projects/minigrant/)

## 2024 PEP Mini Grant PEP CCMP Objective: Clean Waters

All Projects are underway!

### Projects:

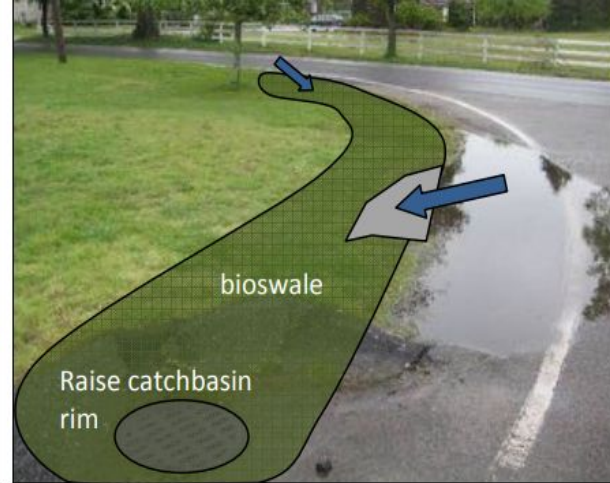
- **The Perfect Earth Project** with “Reducing Nutrient Pollution in the Peconic Estuary Watershed Through Residential Outreach and Nature-Based Land Care Education”.
- **The Accabonac Protection Committee** with “Enhancing Water Quality Communications in the Accabonac Watershed
- **The Citizen Science Learning Center** with “Adopt-a-pond Water Quality Monitoring and Pond Keepers Educational Programing”

# Outreach Events and Programs

- **International Coastal Cleanup Day, September 20**
  - Location TBD
- **Septic Improvement Presentations**
  - August 20th 7pm- FRNCA
  - September 1st- Menantic Creek Keepers + Menantic Peninsula Association + SI WQIAB
  - September 6th- Southold Peconic Civic Association
  - September 16th- North Sea Citizens Advisory Committee
  - September 21st - Accabonac Protection Committee
  - November 19th 7pm- FRNCA
  - Shelter Island Septic Panel with Peconic Baykeeper TBD
  - More being scheduled!
- **A Day in the Life of the Peconic Estuary, October 24**
- **Community Day at Broad Cove with PLT, November 15**

# East Hampton Stormwater Runoff Mitigation

- Plans from 2013 Accabonac Stormwater Management Plan
- **Ashawagh Hall:** Bioswale installation, permeable pavement, pollinator garden
- **Lake Montauk:** in partnership and discussions with CCOM to identify priority areas



# Peconic Estuary Shoreline Summit



**Peconic Estuary Partnership &  
NY Sea Grant**  
June 5th, 2025



## Peconic Estuary Partnership

PROTECTING AND RESTORING LONG ISLAND'S PECONIC BAYS

- 11:00-11:05 Welcome
- 11:05-11:30 Setting the Scene
- 11:30-12:30 Multi-jurisdictional Panel
- 12:30-1:30 Lunch
- 1:30-2:00 Lessons Learned from Delaware
- 2:00-2:30 Viability of Shoreline Adaptation in the Peconics
- 2:30-2:45 Break
- 2:45-3:30 Shoreline Management Models
- 3:30-3:45 PEP Datasets Lightning Talks
- 3:45-3:55 Moving Forward & Closing Remarks

# Peconic Bay Scallop Updates



## Bay Scallop Symposium

- July 16th, 2025
- Presentation on the updates from the MADL at SBU SoMAS
- Participants: SBU, CCE, NYSDEC, Research groups, East End Trustees, Legislators, Concerned Citizens, Students, and more!



# PEP NYMRC Sea Turtle Release



# A Pilot-Test of Satellite Telemetry Tags to Evaluate Habitat Use by Horseshoe Crab and Diamondback Terrapin in the Peconic Estuary

Matthew Sclafani & Kaitlin Morris  
Cornell Cooperative Extension, Marine Program

## **Collaborators:**

Russ Burke & Karissa Hough (Hofstra),  
Enrico Nardone (Seatuck Environmental Association)



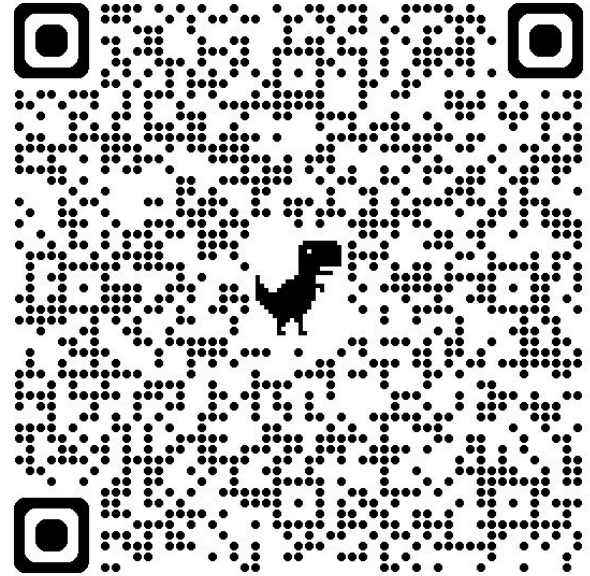


# Diamondback Terrapins

- Little is known about nesting behavior, home range, and other aspects of DBT life history within the Peconic Estuary
- Vulnerable to shoreline hardening and development, habitat loss, predation, etc.
- Satellite tags have only very recently been used on DBT in Jamaica Bay by Dr. Russ Burke (Collaborator on this project)

**REMINDER:** Ongoing projects & Map ID.

- **Voting organizations : Add projects within PE Boundary**
  - Red= Not initiated
  - Yellow= In progress
  - Green= Done



<https://earth.google.com/earth/d/1MWCbWLeptEv6gC3QfcmF1Z8GgOSNkxA?usp=sharing>

# In Conclusion



**11:40AM:** Public Comment

**12:00PM:** Adjourn